

MF286R

Let's go

Getting started with your device.

ZTE CORPORATION
NO. 55, Hi-tech Road South, Shenzhen, P.R.China
Postcode: 518057

LEGAL INFORMATION

Copyright © 2019 ZTE CORPORATION.

All rights reserved.

No part of this publication may be excerpted, reproduced, translated or utilized in any form or by any means, electronic or mechanical, including photocopying and microfilm, without the prior written permission of ZTE Corporation.

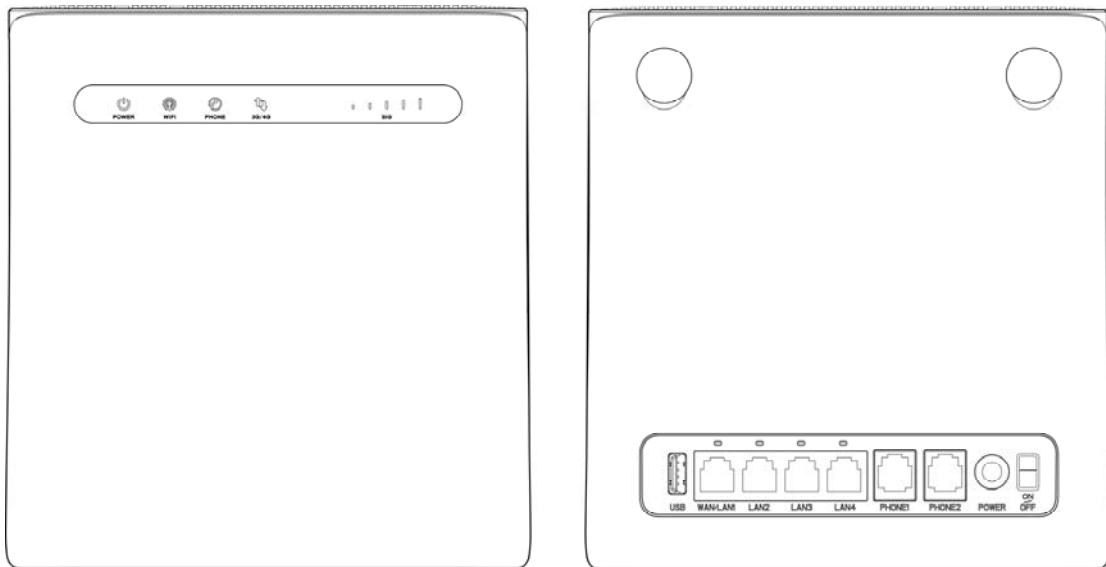
The manual is published by ZTE Corporation. We reserve the right to make modifications on print errors or update specifications without prior notice.

Version No. : R1.0

Edition Time: October 23, 2019

Getting to Know Your Device





External View




NOTE:

Please use the original external antenna if necessary.

Indicators

Indicator	State	Description
POWER 	Blue on	Power is on and external power supply is working normally.
	Off	Power is off or external power supply is working abnormally.
WIFI 	Blue on	Wi-Fi works normally with no data transmission.
	Blue Blinking	Wi-Fi works normally with data transmission.
	Off	Wi-Fi works abnormally or the Wi-Fi function is disabled.
PHONE 	Off	The phone is not in use.
	Blue Blinking	The phone is ringing.
	Blue on	The phone is in calling.
3G/4G 	Red	The device is turned on but not registered to the mobile network. No (U)SIM card is inserted or there is no network service available.
	Blue Blinking	The device is connected to the LTE network and data is being transferred.
	Blue Solid	The device is registered to the LTE network.

Indicator	State	Description
	Green Blinking	The device is connected to the 2G/3G network and data is being transferred.
	Green Solid	The device is registered to the 2G/3G network.
SIG 	Blue on	Signal level panel. Strength is from weak to strong.
	Off	There is no signal or no (U)SIM card is inserted.



NOTE:

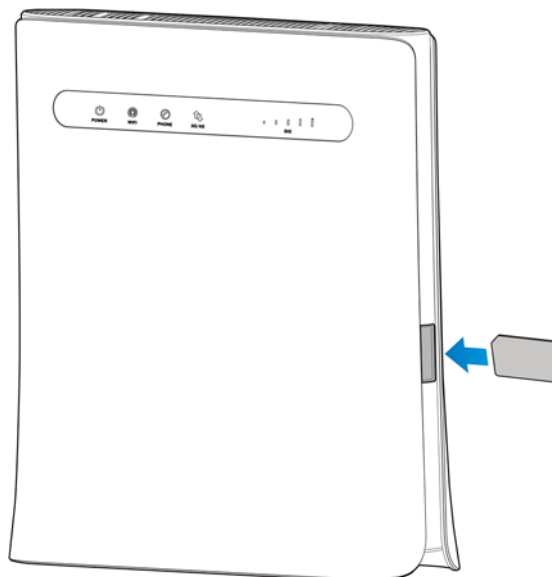
The phone function needs the network support.

Buttons

Button	Description
RESET	Press and hold for about 3 seconds to restore factory default configurations.
WLAN	Press to turn off/on the Wi-Fi function.
WPS	Press to activate the WPS function.

Installing the (U)SIM card

Hold the (U)SIM card with the cut corner oriented as shown and slip it into the card slot until you hear a click.



WARNINGS!

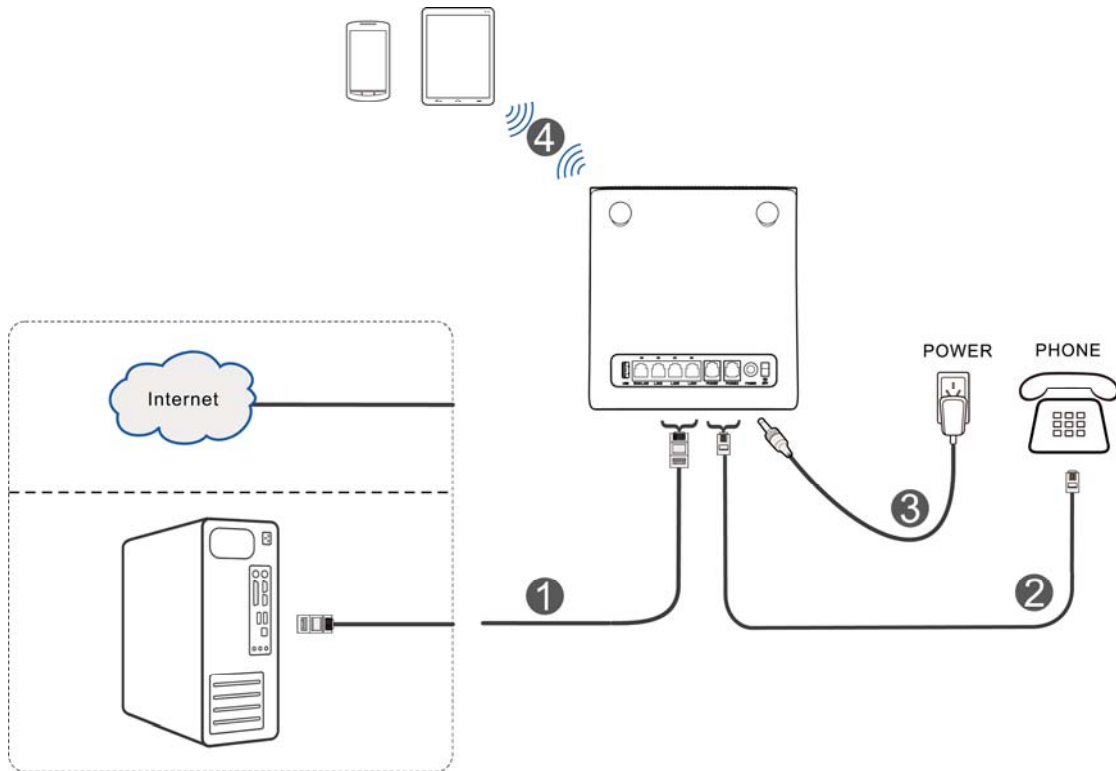
- Before installing the (U)SIM card, power off your device and remove the external power adapter.
- Your device does not support micro-SIM and nano-SIM card or any other nonstandard (U)SIM cards. To avoid device damage, please do not use them or any card holders.

Getting Started With Your Device

Connecting Your Device

Follow the number to connect your device.

If you want to use the mobile network to connect to the Internet or use your home phone, you need to insert your (U)SIM card first.



Starting Your Device

! CAUTION:

Your device must be placed in a well-ventilated environment. Do not cover the device.

Slide the **on/off** switch to start your device. After the device is initialized, make sure the LED indicators are in normal status.

✎ NOTE:

After your device is powered off, if you are called, the caller will hear a prompt tone like “The subscriber you are dialing cannot be reached now.”

Configuring Your PC

The following procedure describes how to configure the Internet Protocol in Windows for your Wi-Fi connection.

1. Right-click **Network** and select **Properties**.
2. Select **Change adapter settings**.
3. Right-click **Wireless Network Connection** and select **Properties**.

✎ NOTE:

If you use a network cable to connect your PC to your device, you need to right-click **Local Area Connection** and select **Properties**.

4. Select **Internet Protocol Version 4 (TCP/IPv4)** and click **Properties**.
5. Select **Obtain an IP address automatically** and **Obtain DNS server address automatically**, and click **OK**.

Wireless Connection

If you want to use Wi-Fi to connect to your device, please refer to the following steps.

1. Make sure that the Wi-Fi works normally. Please check the WIFI indicator.
2. Use your normal Wi-Fi application on the client to search for the available wireless network.

 **NOTE:**

Please set the client to obtain an IP address automatically, and the client will get an IP address like “192.168.0.101”. For the detailed procedure, refer to [Configuring Your PC](#).

3. Select the SSID (Wi-Fi name) of your device, and then click **Connect**.

 **NOTE:**

Please check the label on your device to get the default SSID.

4. Enter the password and then click **OK**.

 **NOTE:**

Please check the label on your device to get the default password.

5. Wait until the client device is connected to your device successfully.

Accessing the Internet

Before accessing the Internet, please make sure that the following operations are finished.

- Your device is connected to the terminal device via a network cable or Wi-Fi.
- The terminal device is set to obtain an IP address automatically.

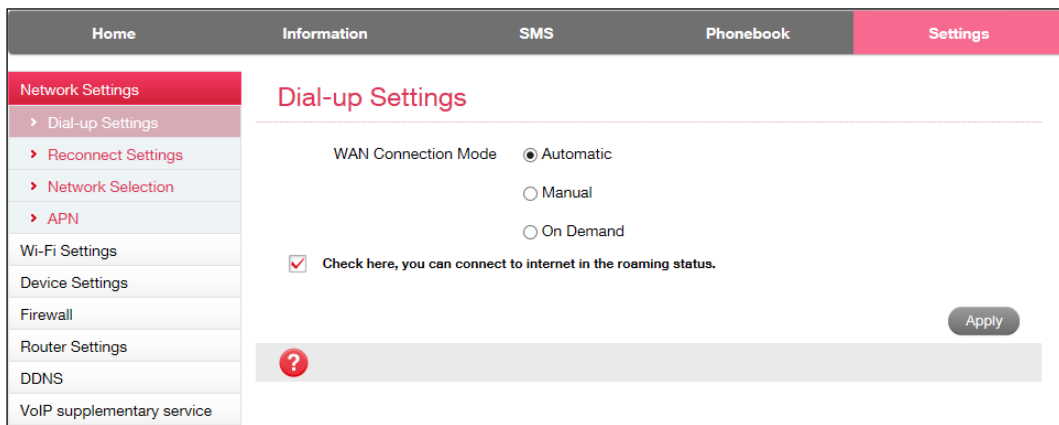
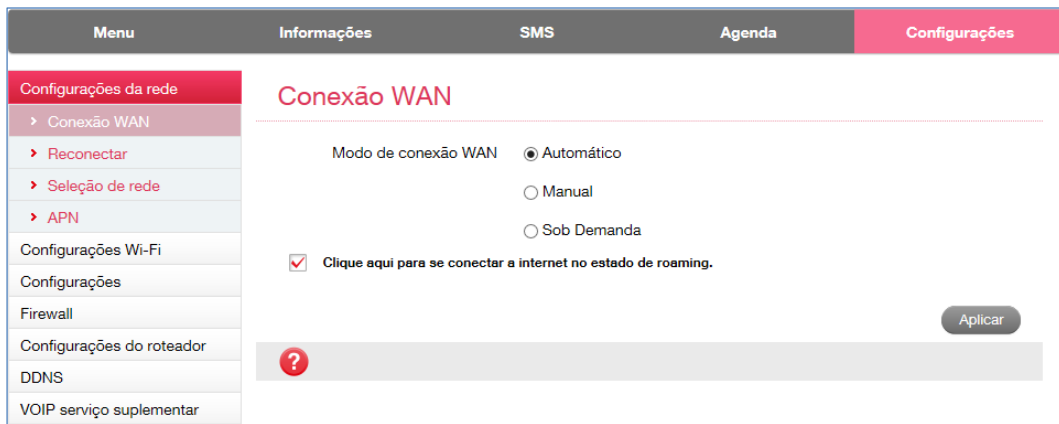
To access the Internet:

1. Launch the Internet browser and enter <http://192.168.0.1> in the address bar. The login page appears.
2. Input the Username and Password and then click **Login**.

 **NOTE:**

View the label on your device to get the default username and password.

3. Select **Settings > Network Settings > Dial-up Settings** and then change the **WAN Connection Mode** if necessary. The default mode is **Automatic**.



4. Begin to enjoy your Internet service.

Telephone Function

Your device supports the telephone function. Before using the telephone function, connect the telephone and insert the (U)SIM card.

To make a call:

1. Pick up the handset.
2. Key in the telephone number.
3. Press the # key on the telephone to send the call, or wait 4~8 seconds for the call to be dialed automatically.



NOTE:

If there is no signal indication, the radio signal is unavailable. Change the location of the device and make sure nothing is blocking it.

WPS Function

Your device supports WPS function. You can use this function to connect the client to your device.

1. Power on your device, and start the WPS function.
2. Press the WPS button on your device to activate the WPS function.
3. Enable the WPS function on your client. Follow the system prompts on your client to finish the connection.



NOTE:

For detailed operations on the client, refer to the corresponding product instructions.

Troubleshooting

Voice Related Problems

Symptoms	Possible Problems/ Solutions
There is no dial tone.	<ul style="list-style-type: none"> Please wait for 1~2 minutes after the router is turned on. If signal strength is weak, you have no good RF reception. Change the location of the router.
There is a prompt / phone alert / announcement as soon as I lift the phone off the hook.	Make sure your (U)SIM card is inserted correctly and the PIN number has been entered. If the PIN number has been entered incorrectly then you will need to enter the PUK code when prompted.
The line is noisy/distorted when I lift the phone off the hook.	<ul style="list-style-type: none"> Remove any electrical appliance which is too close to the phone or your device. The cable or phone set might be faulty.
I hear a rapid engaged tone as soon as I lift the phone off the hook.	<ul style="list-style-type: none"> Put the phone on the hook and try again. Please contact with your service provider.
After dialing the last digit I hear nothing/silence.	When you have finished dialing you can press the # key or wait 4~8 seconds to connect the call.

Internet Related Problems

Symptoms	Possible Problems/ Solutions
I cannot access the Internet at all.	<ul style="list-style-type: none"> Please check your configuration settings. Please wait 1~2 minutes for the router to initialize. Check your service indicators.
The download or upload speed is very slow.	The speed is dependent on signal strength. Check your signal strength and network type.
I cannot visit the Claro 4GMax page.	<ul style="list-style-type: none"> Enter the correct address. The default address is http://192.168.0.1. Only use one network adapter in your PC. Do not use any proxy server.
I cannot establish the Wi-Fi connection between my device and the client.	<ul style="list-style-type: none"> Make sure the Wi-Fi function is active. Refresh network list and select the correct SSID. Check the IP address to make sure your client can obtain an IP address automatically in the Internet protocol (TCP/IP) properties. Type the correct network key (Wi-Fi password) when you connect to the device.

Others

Symptoms	Possible Problems/ Solutions
About the password	<ul style="list-style-type: none"> For the Wi-Fi connection password, please check the

Symptoms	Possible Problems/ Solutions
	<p>label on the device.</p> <ul style="list-style-type: none"><li data-bbox="858 309 1437 367">• Please check the label on the device to get the default username and password of the Claro 4GMax page.<li data-bbox="858 376 1437 456">• If you changed the password and forgot the new password, you need to restore the device to the factory default settings.

Warning and Notice

Safety Precautions

- Some electronic devices may be susceptible to electromagnetic interference. Locate the router away from TV set, radio and other electronic equipment to avoid electromagnetic interference.
- The router may interfere with medical devices like hearing aids and pacemakers. Consult a physician or the manufacturer of the medical device before using the router.
- Please keep yourself at least 20 centimeters away from router.
- Do not use your router in dangerous environments such as oil terminals or chemical factories where there are explosive gases or explosive products being processed.
- Please use original accessories or accessories that are authorized by ZTE. Unauthorized accessories may affect the router performance, damage the router or cause danger to you.
- Do not attempt to dismantle the router. There are no user serviceable parts.
- Do not allow the router or accessories to come into contact with liquid or moisture at any time. Do not immerse the router in any liquid.
- Do not place objects on top of the router. This may lead to overheating of the device.
- The device must be placed in ventilation environment for use.
- Do not expose the router to direct sunlight or store it in hot areas. High temperature can shorten the life of electronic devices.
- Do not allow children to play with the router or charger.
- Keep the length of the cable between the router and the phone less than 10 meters.
- The router is for indoor use only. Do not use the router outside. Do not connect telephone extensions which run outside of the building. These can result in lightning damage to your unit.
- For pluggable equipment, the socket-outlet shall be installed near the equipment and shall be easily accessible.

Cleaning and Maintaining

- Use an antistatic cloth to clean the router. Do not use chemical or abrasive cleanser as these could damage the plastic case. Turn off your router before you clean it.
- Use the router within the temperature range of $-20^{\circ}\text{C} \sim +55^{\circ}\text{C}$, and the storage temperature range is $-40^{\circ}\text{C} \sim +70^{\circ}\text{C}$. The humidity range is 5%~95%.
- Do not use your router during a thunderstorm. Remove the mains power pack from the wall socket.
- Do not take out your (U)SIM card unnecessarily. The (U)SIM card may be easily lost or it can be damaged by static electricity.

Limited Warranty

- This warranty does not apply to defects or errors in the Product caused by:
 - i. Reasonable abrasion.
 - ii. End User's failure to follow ZTE's installation, operation or maintenance instructions or procedures.
 - iii. End User's mishandling, misuse, negligence, or improper installation, disassembly, storage, servicing or operation of the Product.
 - iv. Modifications or repairs not made by ZTE or a ZTE-certified individual.
 - v. Power failures, surges, fire, flood, accidents, actions of third parties or other events outside ZTE's reasonable control.
 - vi. Usage of third-party products, or usage in conjunction with third-party products provided that such defects are due to the combined usage.
 - vii. Any other cause beyond the range of normal usage intended for the Product.

End User shall have no right to reject or return the Product, or receive a refund for the Product from ZTE under the above-mentioned situations.

- This warranty is End User's sole remedy and ZTE's sole liability for defective or nonconforming items, and is in lieu of all other warranties, expressed, implied or statutory, including but not limited to the implied warranties of merchantability and fitness for a particular purpose, unless otherwise required under the mandatory provisions of the law.

Limitation of Liability

ZTE shall not be liable for any loss of profits or indirect, special, incidental or consequential damages resulting from or arising out of or in connection with using of this product, whether or not ZTE had been advised, knew or should have known of the possibility of such damages, including, but not limited to lost profits, interruption of business, cost of capital, cost of substitute facilities or product, or any downtime cost.

For more assistance, please:

- Send E-mail to mobile@zte.com.cn
- Visit www.ztedevices.com

FCC Regulations:

This device complies with part 15 of the FCC Rules. Operation is subject to the following two conditions: (1) This device may not cause harmful interference, and (2) this device must accept any interference received, including interference that may cause undesired operation. This device has been tested and found to comply with the limits for a Class B digital device, pursuant to Part 15 of the FCC Rules. These limits are designed to provide reasonable protection against harmful interference in a residential installation. This equipment generates, uses and can radiated radio frequency energy and, if not installed and used in accordance with the instructions, may cause harmful interference to radio communications. However, there is no guarantee that interference will not occur in a particular installation. If this equipment does cause harmful interference to radio or television reception, which can be determined by turning the equipment off and on, the user is encouraged to try to correct the interference by one or more of the following measures:

- Reorient or relocate the receiving antenna.
- Increase the separation between the equipment and receiver.
- Connect the equipment into an outlet on a circuit different from that to which the receiver is connected.
- Consult the dealer or an experienced radio/TV technician for help.

Caution: Changes or modifications not expressly approved by the party responsible for compliance could void the user 's authority to operate the equipment.

FCC RF Exposure Information (SAR)

This device is designed and manufactured not to exceed the emission limits for exposure to radio frequency (RF) energy set by the Federal Communications Commission of the United States.

During SAR testing, this device is set to transmit at its highest certified power level in all tested frequency bands, and placed in positions that simulate RF exposure in usage against the head with no separation, and near the body with the separation of 10 mm. Although the SAR is determined at the highest certified power level, the actual SAR level of the while operating can be well below the maximum value. This is because the device is designed to operate at multiple power levels so as to use only the power required to reach the network. In general, the closer you are to a wireless base station antenna, the lower the power output.

The exposure standard for wireless employs a unit of measurement known as the Specific Absorption Rate, or SAR. The SAR limit set by the FCC is 1.6W/kg.

Tests for SAR are conducted using standard operating positions accepted by the FCC with the device transmitting at its highest certified power level in all tested frequency bands.

The FCC has granted an Equipment Authorization for this model device with all reported SAR levels evaluated as in compliance with the FCC RF exposure guidelines. SAR information on this model device is on file with the FCC and can be found under the Display Grant section of www.fcc.gov/oet/ea/fccid after searching on FCC ID: SRQ-MF286R.